



The Chalet Colore Residence Detail

Bedroom Suite Details

- **3 Bedroom Suites**
 - Master Suite with King Bed, fireplace, balcony, office nook, and en-suite bath with Kohler Infinity whirlpool bath tub, steam shower & heated floor
 - Brown Suite with Queen Bed and en-suite bathroom
 - Gold Suite with Full bed and twin trundle, balcony, and en-suite bathroom

Penthouse Details

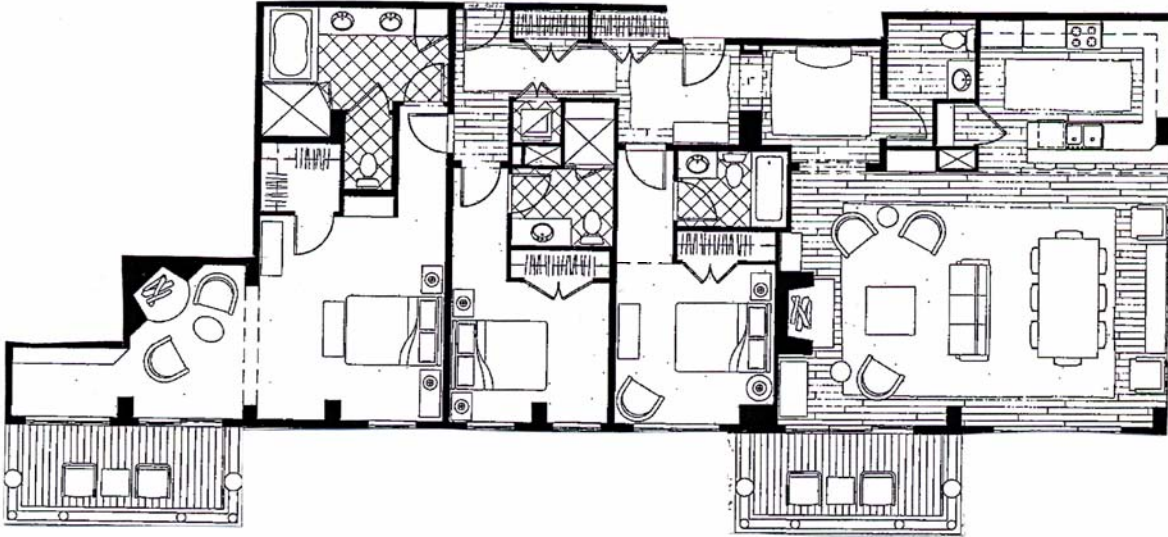
- The Penthouse is located on the 9th floor with 2,100 sq. ft. of living space.
- The Penthouse offers Valley Views
- The Penthouse can accommodate five guests with traditional bedding and up to six guests by utilizing the trundle bed in the Gold Suite.
- Fully equipped commercial kitchen with barstool seating for four
- Formal dining area accommodates up to ten
- Family Room with Moss Rock Fireplace
- Guest Powder Room
- Washer, dryer, iron and ironing board inside Residence

Technology

- 4 televisions all with premium Cable & DVD
- Stereo system in Family Room, Master Suite and Gold Room
- Phone with multiple portable phones and unlimited calling in the USA
- Fax machine with dedicated line
- Wireless Internet Access - Guest needs to provide laptop
- Fax/Scan/Copy Machine



The Chalet Colore Floorplan



Please Note: This is a copy of the developer's construction floor plan and changes were made during the building process. The purpose of this plan is to give a general feel for the layout of the property. Please contact the reservation manager for details regarding specific changes.

