



The Colorado Lodge Residence Detail

Bedroom Suite Details

- **4 Bedroom Suites, Den, and Guest Powder Room**
 - Master Suite with King Bed, fireplace, office nook, and en-suite bathroom with two person Jacuzzi tub, steam shower & heated floor.
 - Guest Master Suite with King Bed and en-suite bath with double vanity & whirlpool tub
 - Queen Suite with Queen Bed and twin trundle, balcony, and private en-suite bathroom
 - Twin Suite with two twin beds, balcony, and private en-suite bathroom
 - Den with twin pullout sleeper

Spacious Fully Equipped Penthouse

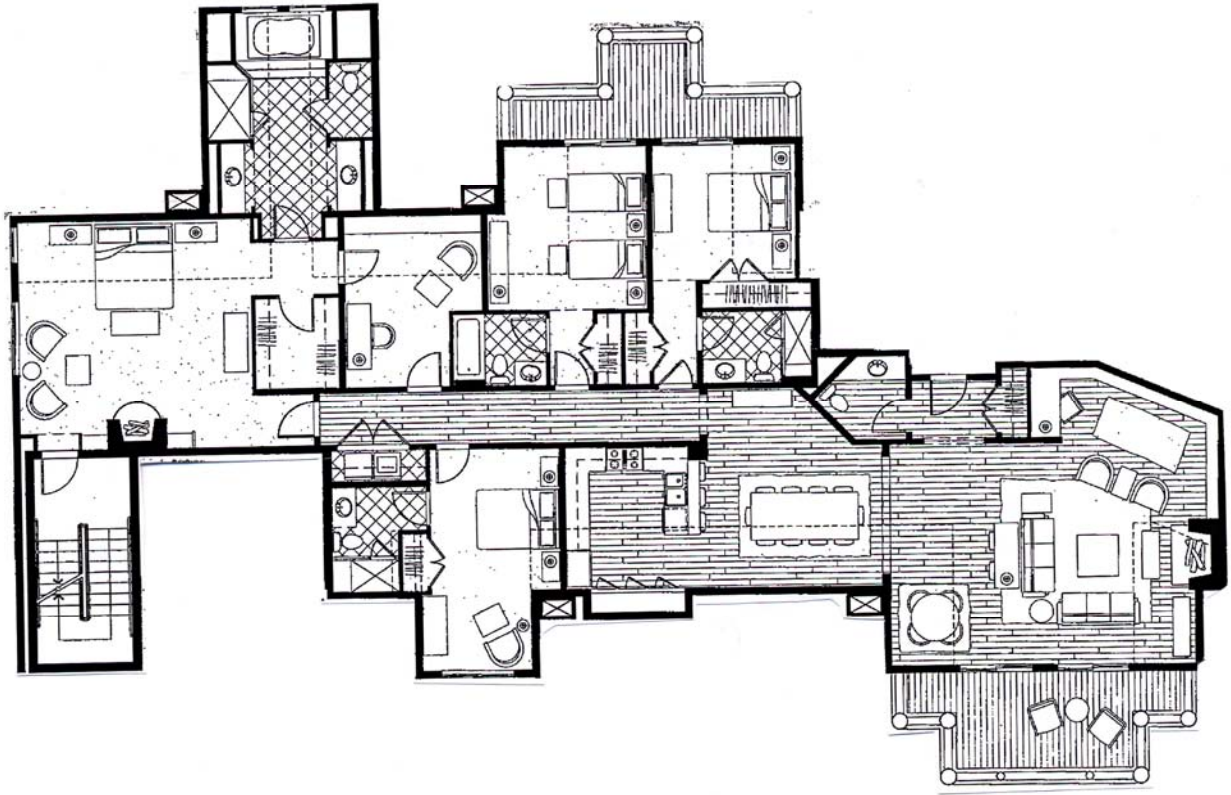
- This Penthouse is on the 11th floor (top floor) on one level and offers 3,250 sq. ft. of living space.
- The Penthouse offers both Ski Mountain and Valley Views
- The Penthouse can accommodate eight guests with traditional bedding and up to ten with use of trundle bed in Queen Suite and twin pullout sleeper in Den.
- Fully equipped commercial kitchen with barstool seating for three- unique features include double oven & Viking Warmer Drawer
- Formal dining area which accommodates up to eight
- Family Room with Moss Rock Fireplace & Wine Cove
- Guest Powder Room
- Gas grill on terrace with outdoor seating
- Laundry Room inside residence with full size washer, dryer, iron and ironing board

State of the Art Technology

- Six LCD TVs with premium cable service - main living offers surround sound & DVD.
- Multiple cordless speaker phones with unlimited calling plan for calls made within USA
- Fax machine with a dedicated line
- Computer with high-speed wireless Internet and wireless access throughout the penthouse
- Printer/Fax/Scanner/Copier



The Colorado Lodge Floorplan



Please Note: This is a copy of the developer's construction floor plan and changes were made during the building process. The purpose of this plan is to give a general feel for the layout of the property. Please contact the reservation manager for details regarding specific changes.

