



## The Eagle's Nest Residence Detail

### Bedroom Suite Details

- **3 Bedrooms**
  - Master Suite with King Bed and two-person Jacuzzi tub, steam shower & heated floor
  - Guest Room with Queen Bed – access to bathroom in hallway with shower that also serves as the powder room.
  - Kid's Suite with built-in bunk bed and daybed with trundle – en-suite bathroom with tub and shower.

### Penthouse Details

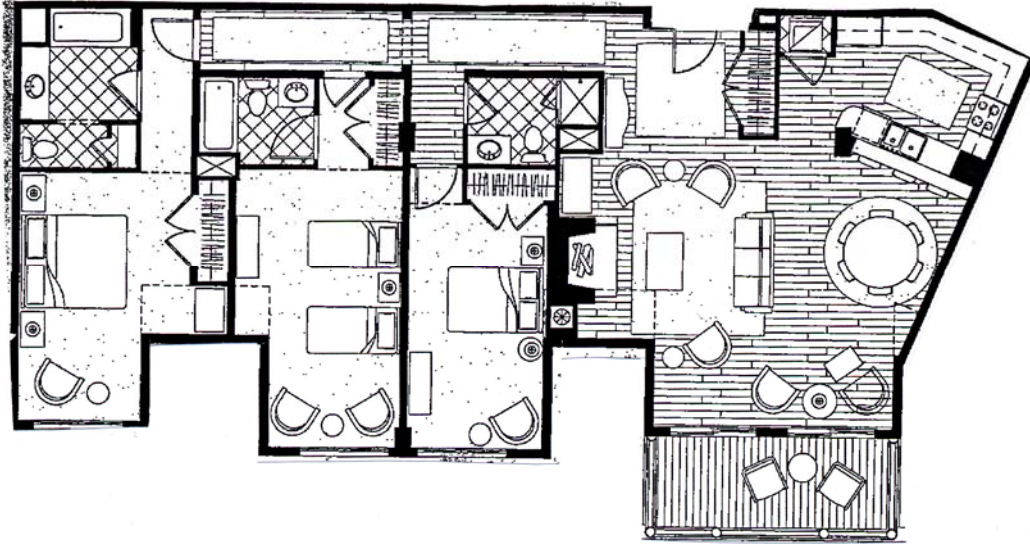
- The Penthouse is on the 10<sup>th</sup> floor and offers 1,800 sq. ft. of living space.
- The Penthouse offers Ski Mountain Views.
- The Penthouse can accommodate up to four adults and four children.
- Fully equipped commercial kitchen with barstool seating for three.
- Formal dining area accommodates up to six.
- Family Room with Moss Rock fireplace
- Balcony with Ski Mountain Views and seating for four
- Washer, dryer, iron and ironing board inside residence

### Technology

- 3 TV's with premium cable/DVD/CD with bose sound system in main living area. NOTE: the Queen Bedroom doesn't have a TV.
- 2 phone lines with cordless phones in family room, master and kid's bedroom.
- 17"inch laptop computer with high-speed wireless internet throughout the Penthouse



# The Eagle's Nest Floorplan



**Please Note:** This is a copy of the developer's construction floor plan and changes were made during the building process. The purpose of this plan is to give a general feel for the layout of the property. Please contact the reservation manager for details regarding specific changes.

