



The Mountain Hideaway Residence Detail

Bedroom Suite Details

- **2 Bedroom Suites & Loft**
 - Master Suite with King Bed and two-person Jacuzzi tub, steam shower & heated floor
 - Guest Suite with Queen Bed and en-suite full bathroom
 - Loft with twin bed and trundle – bathroom access with a shower on main floor

Residence Details

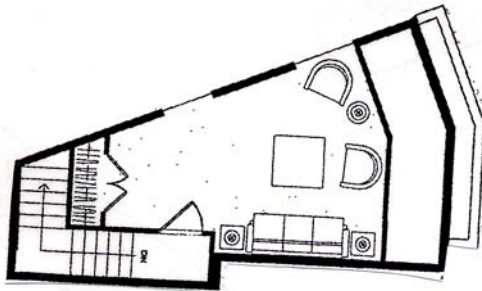
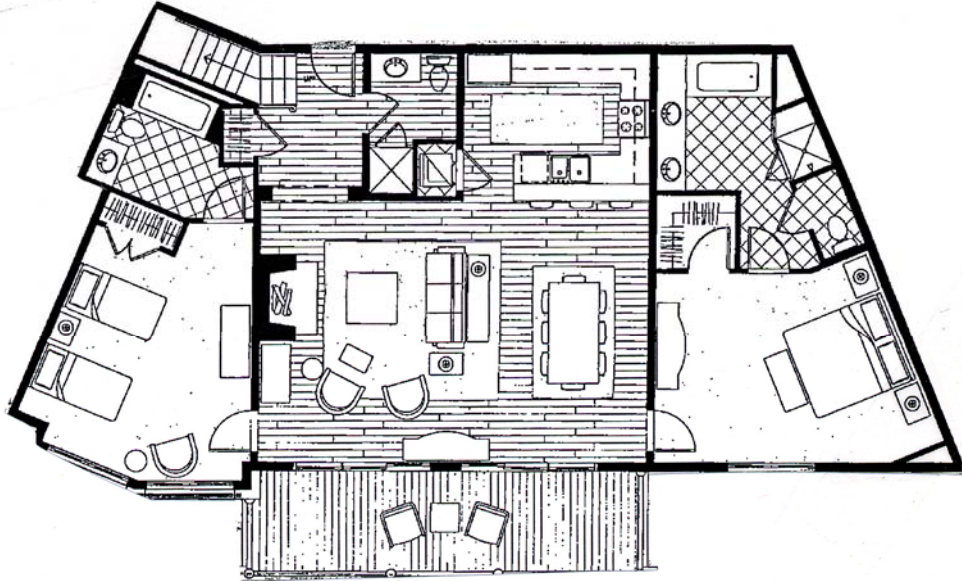
- The residence is on the 4th floor (main lobby level of hotel) and offers 1,800 sq. ft. of living space.
- The residence offers Valley Views
- The residence can accommodate five guests with traditional bedding and up to six utilizing the pull-out trundle in the upstairs loft.
- Fully equipped commercial kitchen with barstool seating for three
- Formal dining area which accommodates up to six
- Family Room with Moss Rock Fireplace
- Outdoor balcony with seating for two
- Laundry Room inside residence with washer, dryer, iron and ironing board

Technology

- 3 televisions with basic cable service
- Private phone line with multiple phones
- Access to High-speed wireless Internet in Residence – However, guest must supply their own computer



The Mountain Hideaway Floorplan



Please Note: This is a copy of the developer's construction floor plan and changes were made during the building process. The purpose of this plan is to give a general feel for the layout of the property. Please contact the reservation manager for details regarding specific changes.

