



The Tuscan Villa Residence Detail

Bedroom Suite Details

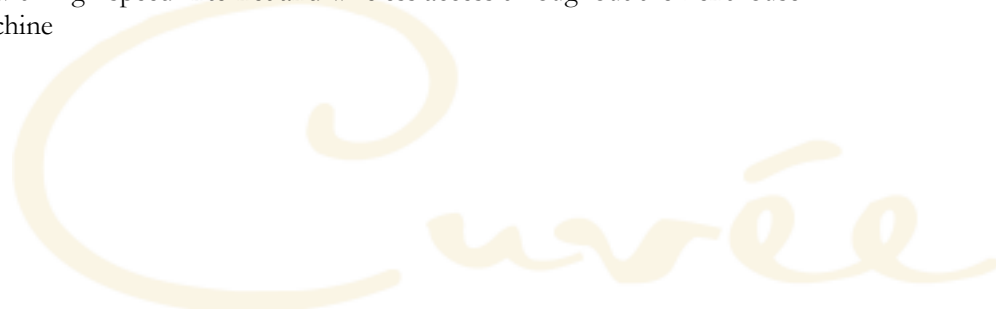
- **3 Bedroom Suites**
 - Master Suite with King Bed, window seat, and two-person Jacuzzi tub, steam shower & heated floor
 - Guest Suite with Queen Bed, access to outdoor balcony overlooking ski runs, and en-suite bathroom
 - King or Twin Bedroom (two twins or one king) with trundle bed and leather loveseat with pull-out twin sofa bed and en-suite bathroom.

Penthouse Details

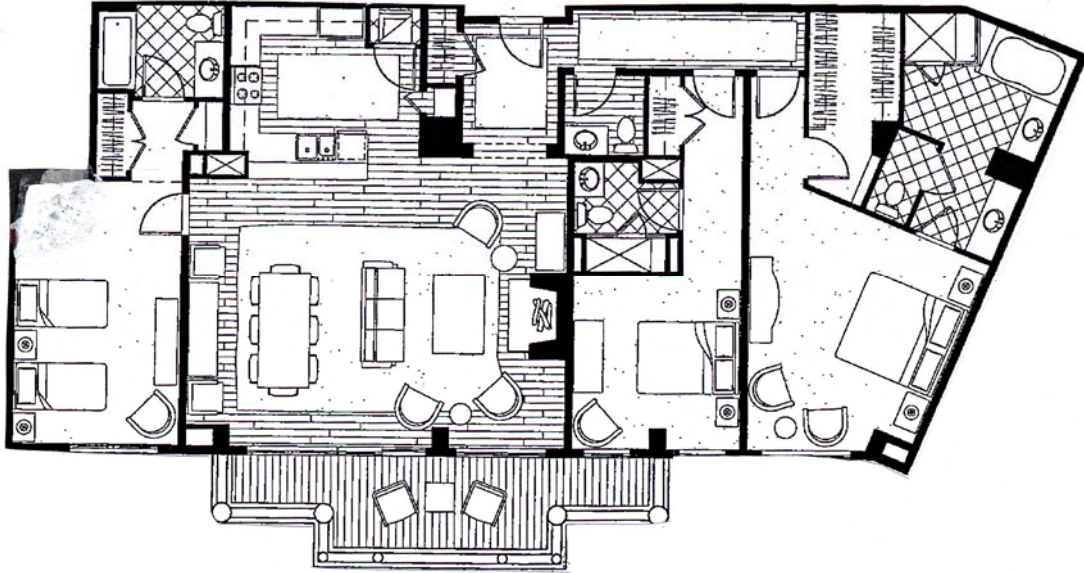
- The Penthouse is on the 9th floor and offers 2,200 sq. ft. of living space
- The Penthouse offers Ski Mountain Views
- The Penthouse accommodates six guests with traditional bedding and up to eight utilizing a trundle bed and a pullout twin sleeper sofa in the Twin Bedroom.
- California Closets in all bedrooms
- Fully equipped commercial kitchen with barstool seating for three - small appliances include Italian Cappuccino machine and kitchen aid mixer.
- Formal dining area accommodates up to ten
- Family Room with Moss Rock Fireplace
- Custom scene lighting in the main living area
- An array of games for family entertainment is kept in family room armoire
- Play-Station is available.
- Lynx Stainless Steele Gas grill on terrace with outdoor seating for up to four
- Guest Powder Room
- Washer, dryer, iron and ironing board inside residence

Technology

- 4 televisions including flat panel LCDs in each bedroom all with satellite service & DVD players – perfect for enjoying the selection of DVD movies
- Stereo system in family room with a selection of CDs
- Phones with speaker phone ability and unlimited calling within the USA
- Fax Machine with dedicated line
- Gateway Profile4 computer with high-speed Internet and wireless access throughout the Penthouse
- Printer/Fax/Scan/Copy machine



The Tuscan Villa Floorplan



Please Note: This is a copy of the developer's construction floor plan and changes were made during the building process. The purpose of this plan is to give a general feel for the layout of the property. Please contact the reservation manager for details regarding specific changes.

